

# AC/DC Converter

TGRM



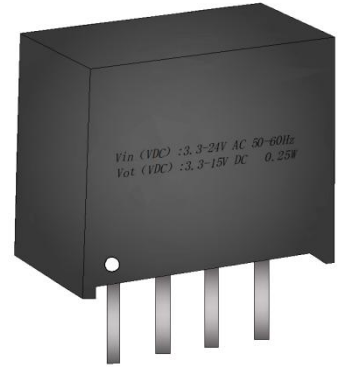
Address: Building.E9 & E13,  
Xingmeng Park Enterprises  
Mansion, No.198, Mingzhu  
Avenue, High-tech Zone, Hefei,  
230088, China

Fax: 0551-65547975  
sale@tiger-transformer.com

## Features

- Single output rail
- Industry standard pinout
- 1kVDC/1s or 2kVDC/1s basic isolation
- High efficiency for low power applications
- UL94V-0 package material
- Optional continuous short circuit protection
- Fully encapsulated
- Efficiency up to 76%

## Unregulated Converters



# TGRM

## Description

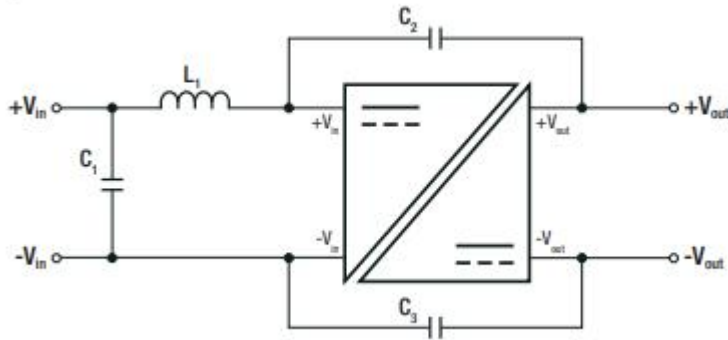
The TGRM series AC/DC converter has been designed for isolating or converting DC power rails with very light loads. Efficiencies are typically 10% higher than a comparable 0.5W or 1W converters run at the same low load.

Specifications (measured @ Ta= 25°C, nom. Vin, full load and after warm-up unless otherwise stated)

BASIC CHARACTERISTICS				
Parameter	Condition	Min.	Typ.	Max.
Input Voltage Range			±10%	
Minimum Load		0%		
Internal Operating Frequency		50kHz	90kHz	105kHz
Output Ripple and Noise	20MHz BW			50mVp-p

**Notes:** Note4: No proper operation with DC input voltage Note5: The products were submitted for safety files at AC-Input operation Note6: Refer to "Line Deratin

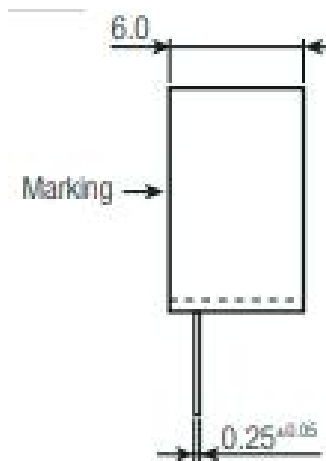
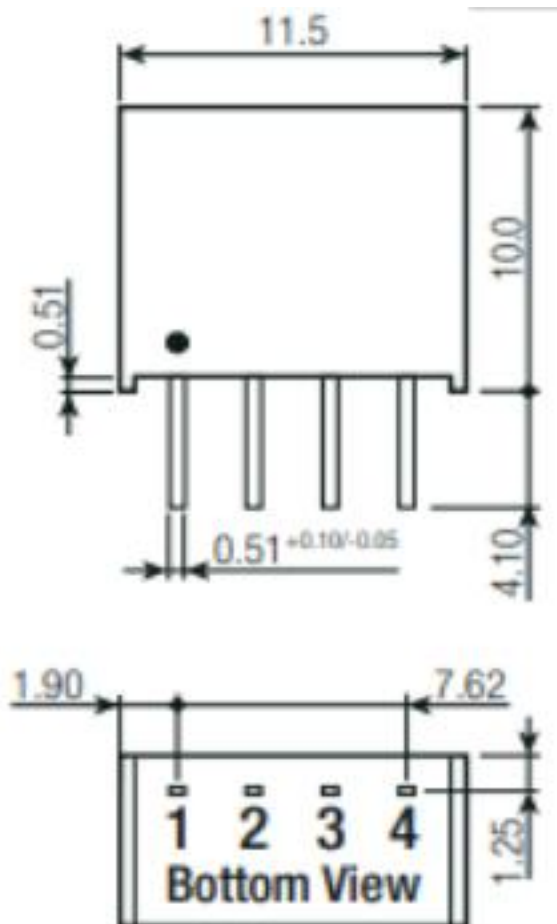
## Protection Circuitm



Specifications (measured @  $T_a = 25^\circ\text{C}$ , nom.  $V_{in}$ , full load and after warm-up unless otherwise stated)

ENVIRONMENTAL			
Parameter	Condition		Value
Operating Temperature Range	full load @ free air convection (see graph)		$-40^\circ\text{C}$ to $+85^\circ\text{C}$
Operating Altitude			2000m
Operating Humidity	non-condensing		95% RH max.
Pollution Degree			PD2
MTBF	according to MIL-HDBK-217F, G.B.	$+25^\circ\text{C}$	$1327 \times 10^3$ hours
		$+85^\circ\text{C}$	$302 \times 10^3$ hours

## Dimension Drawing (mm)



Recommended Footprint Details

