

TG182CD

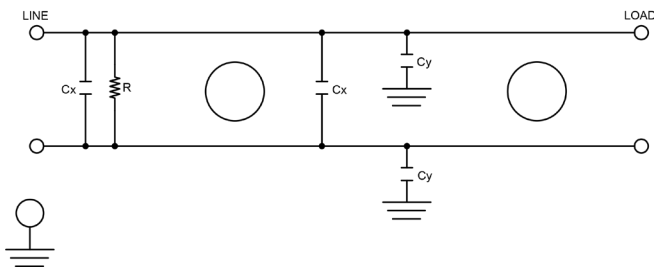
ULTRA HIGH PERFORMANCE DUAL STAGE IEC INLET FILTER

FEATURES

- » Rated currents include **3A, 6A, and 10A**
- » Dual Stage Line Filter
- » Available with **QD** tabs or **W** (wireleads) options
- » Ultra High Performance
- » Agency Approved to UL1283/60929, CSA C22.2, EN 60939
- » Y-cap value can be adjusted to fit specifications

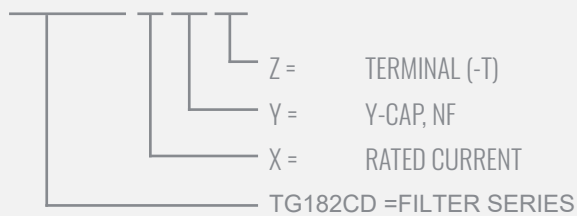


ELECTRICAL SCHEMATIC



HOW TO ORDER

TG182CD- X - Y - Z



SPECIFICATIONS

OPERATING FREQUENCY	50/60Hz
IEC INLET	C14
MAX. OPERATING VOLTAGE	250V +10%
AMBIENT TEMPERATURE	-25 TO 40°C
CLIMATIC CATEGORY	25/100/21
TERMINALS (-T)	QD: 0.25" TABS WIRE LEADS
TYP. WEIGHT, LBS (KG)	0.5 (0.2)

TYPICAL LEAKAGE CURRENT

@ 250 VAC 50 Hz	0 - 0.8 mA Max.
@ 120 VAC 60 Hz	0 - 0.4 mA Max.

HIPOT RATINGS

LINE TO GROUND	2200 VDC
----------------	----------

TYPICAL APPLICATIONS

- ✓ Electronic Equipment
- ✓ Household Appliances
- ✓ Power Supplies
- ✓ Medical Equipment
- ✓ Fitness Systems
- ✓ Industrial Equipment

TG182CD

ULTRA HIGH PERFORMANCE DUAL STAGE IEC INLET FILTER

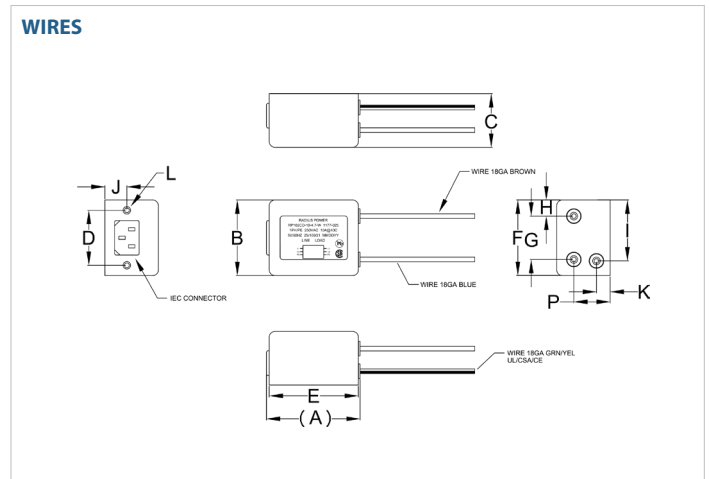
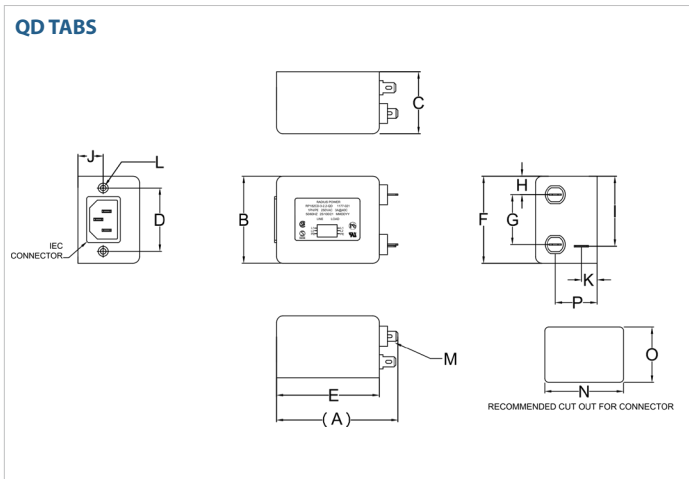
MODEL NO.	RATED CURRENT, A @ 40° C	Y-CAP, nF	LEAKAGE CURRENT, mA @ 250V AC, 50 Hz / @ 120V AC, 60 Hz		TERMINAL OPTIONS		MAX. DIMENSIONS" (MM)		
					(QD) OUTPUT	(W) OUTPUT	WIDTH	(LENGTH)	HEIGHT
TG182CD-3-0-QD	3	0	-	-	✓		2.17" (55)	2.98" (75.8)	1.54" (39)
TG182CD-3-0-W	3	0	-	-		✓	2.17" (55)	2.69" (68.38)	1.54" (39)
TG182CD-3-.47-QD	3	0.47	0.07	0.04	✓		2.17" (55)	2.98" (75.8)	1.54" (39)
TG182CD-3-.47-W	3	0.47	0.07	0.04		✓	2.17" (55)	2.69" (68.38)	1.54" (39)
TG182CD-3-2.2-QD	3	2.2	0.34	0.19	✓		2.17" (55)	2.98" (75.8)	1.54" (39)
TG182CD-3-2.2-W	3	2.2	0.34	0.19		✓	2.17" (55)	2.69" (68.38)	1.54" (39)
TG182CD-3-3.3-QD	3	3.3	0.51	0.29	✓		2.17" (55)	2.98" (75.8)	1.54" (39)
TG182CD-3-3.3-W	3	3.3	0.51	0.29		✓	2.17" (55)	2.69" (68.38)	1.54" (39)
TG182CD-3-4.7-QD	3	4.7	0.73	0.42	✓		2.17" (55)	2.98" (75.8)	1.54" (39)
TG182CD-3-4.7-W	3	4.7	0.73	0.42		✓	2.17" (55)	2.69" (68.38)	1.54" (39)
TG182CD-6-0-QD	6	0	-	-	✓		2.17" (55)	2.98" (75.8)	1.54" (39)
TG182CD-6-0-W	6	0	-	-		✓	2.17" (55)	2.69" (68.38)	1.54" (39)
TG182CD-6-.47-QD	6	0.47	0.07	0.04	✓		2.17" (55)	2.98" (75.8)	1.54" (39)
TG182CD-6-.47-W	6	0.47	0.07	0.04		✓	2.17" (55)	2.69" (68.38)	1.54" (39)
TG182CD-6-2.2-QD	6	2.2	0.34	0.19	✓		2.17" (55)	2.98" (75.8)	1.54" (39)
TG182CD-6-2.2-W	6	2.2	0.34	0.19		✓	2.17" (55)	2.69" (68.38)	1.54" (39)
TG182CD-6-3.3-QD	6	3.3	0.51	0.29	✓		2.17" (55)	2.98" (75.8)	1.54" (39)
TG182CD-6-3.3-W	6	3.3	0.51	0.29		✓	2.17" (55)	2.69" (68.38)	1.54" (39)
TG182CD-6-4.7-QD	6	4.7	0.73	0.42	✓		2.17" (55)	2.98" (75.8)	1.54" (39)
TG182CD-6-4.7-W	6	4.7	0.73	0.42		✓	2.17" (55)	2.69" (68.38)	1.54" (39)
TG182CD-10-0-QD	10	0	-	-	✓		2.17" (55)	2.98" (75.8)	1.54" (39)
TG182CD-10-0-W	10	0	-	-		✓	2.17" (55)	2.69" (68.38)	1.54" (39)
TG182CD-10-.47-QD	10	0.47	0.07	0.04	✓		2.17" (55)	2.98" (75.8)	1.54" (39)
TG182CD-10-.47-W	10	0.47	0.07	0.04		✓	2.17" (55)	2.69" (68.38)	1.54" (39)
TG182CD-10-2.2-QD	10	2.2	0.34	0.19	✓		2.17" (55)	2.98" (75.8)	1.54" (39)
TG182CD-10-2.2-W	10	2.2	0.34	0.19		✓	2.17" (55)	2.69" (68.38)	1.54" (39)
TG182CD-10-3.3-QD	10	3.3	0.51	0.29	✓		2.17" (55)	2.98" (75.8)	1.54" (39)
TG182CD-10-3.3-W	10	3.3	0.51	0.29		✓	2.17" (55)	2.69" (68.38)	1.54" (39)
TG182CD-10-4.7-QD	10	4.7	0.73	0.42	✓		2.17" (55)	2.98" (75.8)	1.54" (39)
TG182CD-10-4.7-W	10	4.7	0.73	0.42		✓	2.17" (55)	2.69" (68.38)	1.54" (39)

*Contact factory for dimensions.

TG182CD

ULTRA HIGH PERFORMANCE DUAL STAGE IEC INLET FILTER

TG182CD MECHANICAL OUTLINES (MM)



SERIES	(A)	B	C	D	E	F	G	H	I	J	K	L	M	N	O	P
QD TABS	2.98" (75.8)	2.17" (55)	1.54" (39)	1.57" (40)	2.56" (65)	2.17" (55)	1.24" (31.5)	0.45" (11.5)	1.72" (43.7)	0.63" (16)	0.39" (10)	0.23-1.25, 2x INSERT 6-32, 2x	0.25, 3x QD,FEMALE, 6.35, 3x	1.30" (32.9)	0.91" (23.1)	1.12" (28.5)
WIRES	2.69" (68.38)	2.17" (55)	1.54" (39)	1.57" (40)	2.56" (65)	2.17" (55)	1.24" (31.5)	0.46" (11.8)	1.75" (44.4)	0.63" (16)	0.39" (10)	0.23-1.25, 2x INSERT 6-32, 2x	N/A	N/A	N/A	1.04" (26.5)

TYPICAL TOLERANCE: +/-0.50MM (0.02")

TYPICAL INSERTION LOSS, dB (50/50 Ohm)

Amps	Freq (MHz)	Insertion Loss (dB)				
		0.15	0.5	1.0	10	30
3	CM (dB)	55	60	70	60	35
	DM (dB)	30	70	56	56	60
6	CM (dB)	48	56	60	55	40
	DM (dB)	16	50	60	55	60
10	CM (dB)	48	55	62	55	40
	DM (dB)	16	50	65	65	68