

# TG182CS

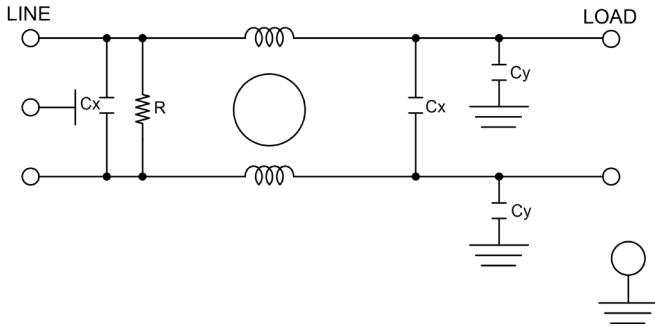
## HIGH PERFORMANCE SINGLE STAGE IEC INLET FILTER

### FEATURES

- » Rated currents include **3A, 6A, and 10A**
- » Single Stage Line Filter
- » Available with **QD** tabs or **W** (wireleads)
- » High Performance
- » Agency Approved to UL1283 / 60929, CSA C22.2, EN 60939
- » Y-cap value can be adjusted to fit specifications

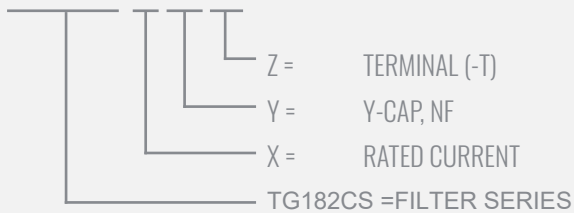


### ELECTRICAL SCHEMATIC



### HOW TO ORDER

TG182CS- X - Y - Z



### SPECIFICATIONS

OPERATING FREQUENCY	50/60Hz
IEC INLET	C14
MAX. OPERATING VOLTAGE	250V +10%
AMBIENT TEMPERATURE	-25 TO 40°C
CLIMATIC CATEGORY	25/100/21
TERMINALS (-T)	QD: 0.25" TABS WIRE LEADS
TYP. WEIGHT, LBS (KG)	0.5 (0.2)

### TYPICAL LEAKAGE CURRENT

@ 250 VAC 50 Hz	0 - 0.8 mA Max.
@ 120 VAC 60 Hz	0 - 0.4 mA Max.

### HIPOT RATINGS

LINE TO GROUND	2200 VDC
----------------	----------

### TYPICAL APPLICATIONS

- ✓ Electronic Equipment
- ✓ Household Appliances
- ✓ Power Supplies
- ✓ Medical Equipment
- ✓ Fitness Systems
- ✓ Industrial Equipment

## TG182CS

### HIGH PERFORMANCE IEC INLET SINGLE STAGE POWER LINE FILTERS

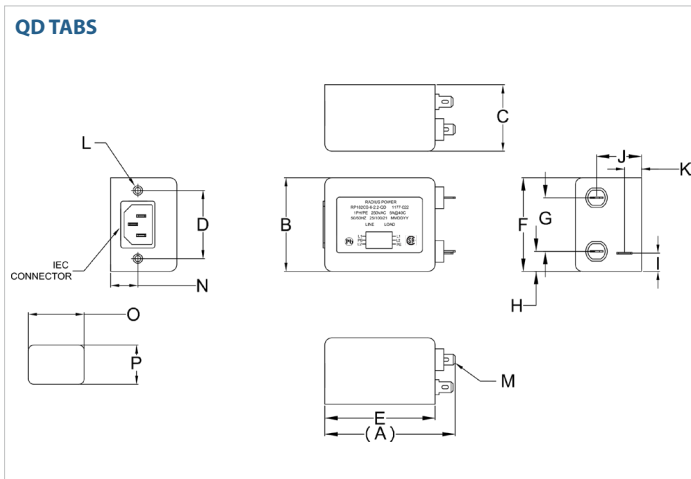
MODEL NO.	RATED CURRENT, A @ 40° C	Y-CAP, nF	LEAKAGE CURRENT, mA @ 250V AC, 50 Hz / @ 120V AC, 60 Hz		TERMINAL OPTIONS		MAX. DIMENSIONS" (MM)		
					(QD) OUTPUT	(W) OUTPUT	WIDTH	(LENGTH)	HEIGHT
T182CS-3-0-QD	3	0	-	-	✓		2.17" (55)	3.02" (76.8)	1.54" (39)
TG182CS-3-0-W	3	0	-	-		✓	*	*	*
TG182CS-3-.47-QD	3	0.47	0.07	0.04	✓		2.17" (55)	3.02" (76.8)	1.54" (39)
TG182CS-3-.47-W	3	0.47	0.07	0.04		✓	*	*	*
TG182CS-3-2.2-QD	3	2.2	0.34	0.19	✓		2.17" (55)	3.02" (76.8)	1.54" (39)
TG182CS-3-2.2-W	3	2.2	0.34	0.19		✓	*	*	*
TG182CS-3-3.3-QD	3	3.3	0.51	0.29	✓		2.17" (55)	3.02" (76.8)	1.54" (39)
TG182CS-3-3.3-W	3	3.3	0.51	0.29		✓	*	*	*
TG182CS-3-4.7-QD	3	4.7	0.73	0.42	✓		2.17" (55)	3.02" (76.8)	1.54" (39)
TG182CS-3-4.7-W	3	4.7	0.73	0.42		✓	*	*	*
TG182CS-6-0-QD	6	0	-	-	✓		2.17" (55)	3.02" (76.8)	1.54" (39)
TG182CS-6-0-W	6	0	-	-		✓	*	*	*
TG182CS-6-.47-QD	6	0.47	0.07	0.04	✓		2.17" (55)	3.02" (76.8)	1.54" (39)
TG182CS-6-.47-W	6	0.47	0.07	0.04		✓	*	*	*
TG182CS-6-2.2-QD	6	2.2	0.34	0.19	✓		2.17" (55)	3.02" (76.8)	1.54" (39)
TG182CS-6-2.2-W	6	2.2	0.34	0.19		✓	*	*	*
TG182CS-6-3.3-QD	6	3.3	0.51	0.29	✓		2.17" (55)	3.02" (76.8)	1.54" (39)
TG182CS-6-3.3-W	6	3.3	0.51	0.29		✓	*	*	*
TG182CS-6-4.7-QD	6	4.7	0.73	0.42	✓		2.17" (55)	3.02" (76.8)	1.54" (39)
TG182CS-6-4.7-W	6	4.7	0.73	0.42		✓	*	*	*
TG182CS-10-0-QD	10	0	-	-	✓		2.17" (55)	3.02" (76.8)	1.54" (39)
TG182CS-10-0-W	10	0	-	-		✓	*	*	*
TG182CS-10-.47-QD	10	0.47	0.07	0.04	✓		2.17" (55)	3.02" (76.8)	1.54" (39)
TG182CS-10-.47-W	10	0.47	0.07	0.04		✓	*	*	*
TG182CS-10-2.2-QD	10	2.2	0.34	0.19	✓		2.17" (55)	3.02" (76.8)	1.54" (39)
TG182CS-10-2.2-W	10	2.2	0.34	0.19		✓	*	*	*
TG182CS-10-3.3-QD	10	3.3	0.51	0.29	✓		2.17" (55)	3.02" (76.8)	1.54" (39)
TG182CS-10-3.3-W	10	3.3	0.51	0.29		✓	*	*	*
TG182CS-10-4.7-QD	10	4.7	0.73	0.42	✓		2.17" (55)	3.02" (76.8)	1.54" (39)
TG182CS-10-4.7-W	10	4.7	0.73	0.42		✓	*	*	*

\*Contact factory for dimensions.

# TG182CS

## HIGH PERFORMANCE IEC INLET SINGLE STAGE POWER LINE FILTERS

### TG182CS MECHANICAL OUTLINES (MM)



SERIES	(A)	B	C	D	E	F	G	H	I	J	K	L	M	N	O	P
QD TABS	3.02" (76.8)	2.17" (55)	1.54" (39)	1.57" (40)	2.56" (65)	2.17" (55)	1.24" (31.5)	0.46" (11.75)	0.42" (10.7)	1.04" (26.5)	0.39" (10)	0.23-1.25, 2x INSERT, 6-32, 2x	0.25, 3x QD, FEMALE, 6.35, 3x	0.63" (16)	1.29" MIN 32.9 MIN	0.91" (23.1)

TYPICAL TOLERANCE: +/-0.02" (0.50MM)

### TYPICAL INSERTION LOSS, dB (50/50 Ohm)

Amps	Freq (MHz)	0.15	0.5	1.0	10	30
		3	CM (dB)	35	55	60
	DM (dB)	15	60	70	65	65
6	CM (dB)	35	55	60	60	55
	DM (dB)	30	60	70	60	60
10	CM (dB)	35	55	60	60	55
	DM (dB)	20	60	70	65	65