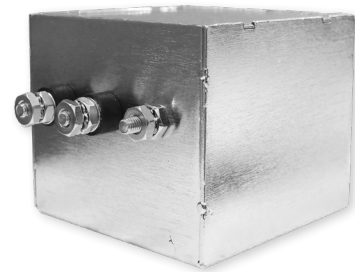


TGC1199

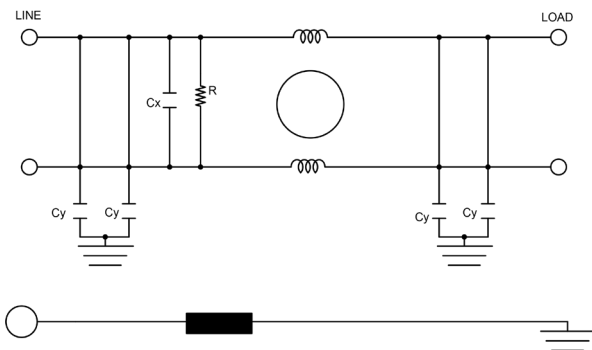
SINGLE STAGE POWER LINE FILTER WITH GROUND CHOKE

FEATURES

- » Rated currents include **20A and 30A**
- » Single Stage Line Filter
- » Available with **S** (studs)
- » Agency Approved to UL1283 / 60929, CSA C22.2, EN 60939
- » Y-cap value can be adjusted to fit specification

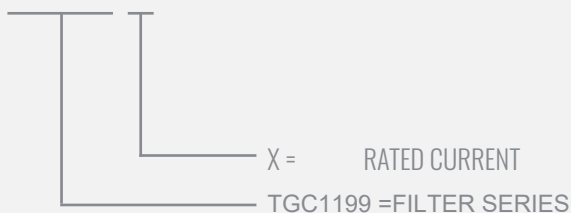


ELECTRICAL SCHEMATIC



HOW TO ORDER

TGC1199- X



SPECIFICATIONS

OPERATING FREQUENCY	50/60 Hz
USABLE FREQUENCY	DC - 400 Hz
MAX. OPERATING VOLTAGE	250V +10%
AMBIENT TEMPERATURE	-25 TO 40°C
CLIMATIC CATEGORY	25/100/21
TERMINALS (-T)	STUDS: 10 - 32
TYP. WEIGHT, LBS (KG)	0.8 (0.4)

TYPICAL LEAKAGE CURRENT

@ 250 VAC 50 Hz	0 - 3.5 mA Max.
@ 120 VAC 60 Hz	0 - 1.8 mA Max.

HIPOT RATINGS

LINE TO GROUND	2700 VDC
----------------	----------

TYPICAL APPLICATIONS

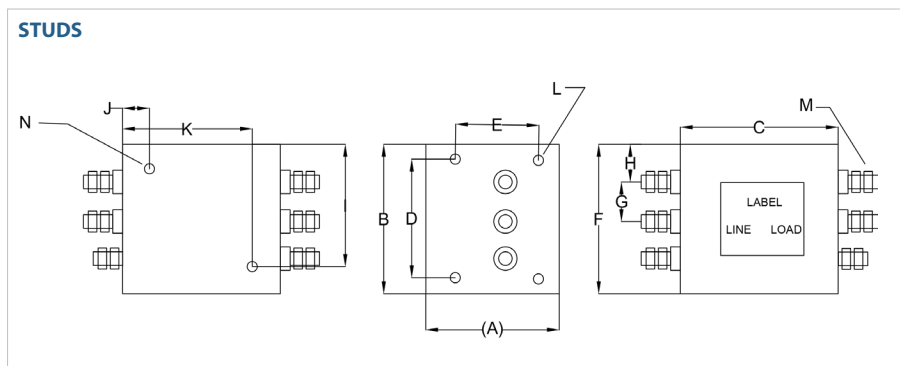
- ✓ Military
- ✓ Aerospace
- ✓ PDU
- ✓ Bulkhead Mount Applications

TGC1199

SINGLE STAGE POWER LINE FILTER WITH GROUND CHOKE

MODEL NO.	RATED CURRENT, A @ 40° C	LEAKAGE CURRENT, mA @ 250V AC, 50 Hz / @ 120V AC, 60 Hz		TERMINAL OPTIONS			MOUNTING BULK HEAD	MAX. DIMENSIONS" (MM)		
				(W) INPUT/ OUTPUT	(S) INPUT/ OUTPUT	(C) INPUT/ OUTPUT		WIDTH	(LENGTH)	HEIGHT
TGC 1199-20	20	3.50	1.80		✓		✓	3.56"(90)	3.23"(82)	3.82"(97)
TGC 1199-30	30	3.50	1.80		✓		✓	3.56"(90)	3.23"(82)	3.82"(97)

TGC1199 MECHANICAL OUTLINES (MM)



SERIES	(A)	B	C	D	E	F	G	H	I	J	K	L	M	N
STUDS	3.23" (82)	3.56" (90)	3.82" (97)	2.84" (72)	2.02" (51)	3.58" (91)	0.95" (24)	0.91" (23)	2.93" (74)	0.65" (17)	3.14" (80)	8-32 INSERT, 4X	10-32 STUD, 6X	6-32 INSERT, 2X

TYPICAL TOLERANCE: +/-0.02" (0.50MM)

TYPICAL INSERTION LOSS, dB (50/50 Ohm)

Amps	Freq (MHz)	0.15	0.5	1.0	10	30
		20	CM (dB)	32	50	60
	DM (dB)	45	60	60	40	30
30	CM (dB)	32	50	60	42	30
	DM (dB)	45	60	60	40	30