

# TGM7200

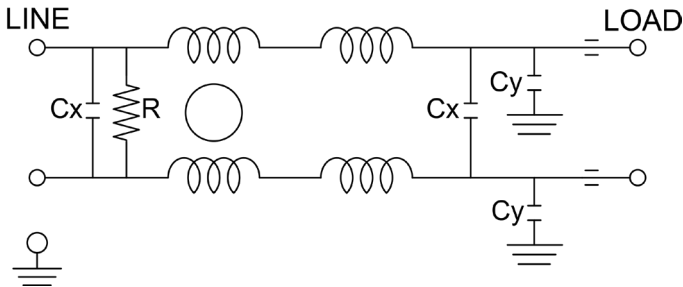
## MIL/COTS AC, SINGLE PHASE EMI POWER LINE FILTER

### FEATURES

- » Rated currents include **5A, 10A, 15A, 25A, 30A, and 50A**
- » Dual Stage Line Filter
- » Available with **S** (studs)
- » Agency Approved to RoHS
- » Y-cap value can be adjusted to fit specification



### ELECTRICAL SCHEMATIC



### SPECIFICATIONS

OPERATING FREQUENCY	50/60/400 Hz
MAX. OPERATING VOLTAGE	300 VAC +10%
AMBIENT TEMPERATURE	-40 TO 70°C
CLIMATIC CATEGORY	25/100/21
TERMINALS (-T)	STUDS: 5-50A (M5)

TYP. WEIGHT, LBS (KG)	1.4-6.5(0.6-2.94)
-----------------------	-------------------

### TYPICAL LEAKAGE CURRENT

@ 250 VAC 60 Hz	0 - 3.50 mA Max.
-----------------	------------------

### HIPOT RATINGS

LINE TO GROUND	1800 VDC
----------------	----------

### TYPICAL APPLICATIONS

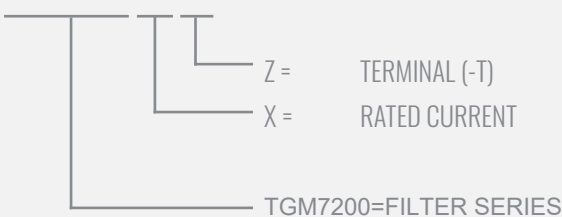
- ✓ Mil-461/ DO-160

### NOTE:

- ✓ Call for other termination types (e.g. Circular Mil-Connectors, etc.) Leakage current is determined by the line to ground capacitors in the filter. The capacitors can be easily varied to match the system leakage requirements.

### HOW TO ORDER

TGM7200 - Y - Z

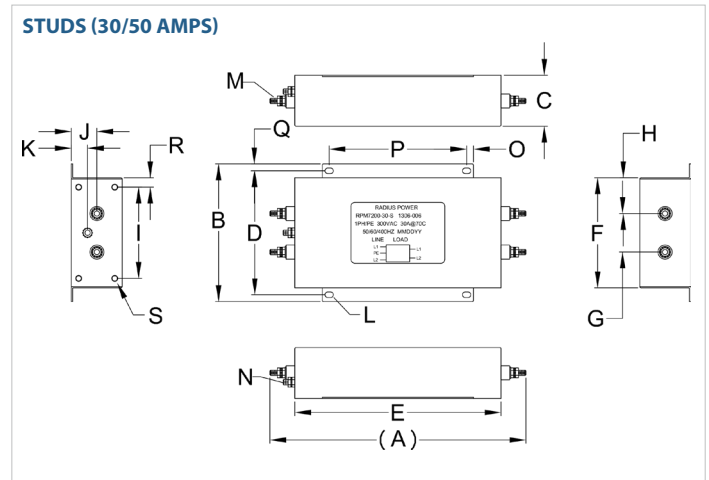
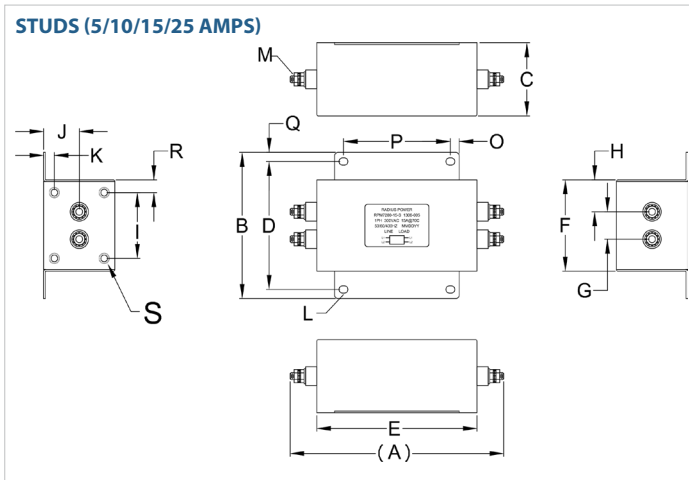


## TGM7200

MIL/COTS **AC**, SINGLE PHASE EMI POWER LINE FILTER

MODEL NO.	RATED CURRENT, A @ 40° C	LEAKAGE CURRENT, mA @ 250V AC, 60 Hz	TERMINAL OPTIONS			MAX. DIMENSIONS" (MM)		
			(QD) INPUT/OUTPUT	(W) INPUT/OUTPUT	(S) INPUT/OUTPUT	WIDTH	(LENGTH)	HEIGHT
TGM 7200-5-S	5	3.50			✓	4.00"(102)	6.00"(152)	2.00"(51)
TGM 7200-10-S	10	3.50			✓	4.00"(102)	6.00"(152)	2.00"(51)
TGM 7200-15-S	15	3.50			✓	5.00"(127)	9.31"(237)	1.85"(47)
TGM 7200-25-S	25	3.50			✓	5.00"(127)	9.31"(237)	1.85"(47)
TGM 7200-30-S	30	3.50			✓	5.00"(127)	11.31"(287)	1.85"(47)
TGM 7200-50-S	50	3.50			✓	5.00"(127)	11.31"(287)	1.85"(47)

### TGM7200MECHANICAL OUTLINES (MM)



SERIES	(A)	B	C	D	E	F	G	H	I	J	K	L	M	N	O	P	Q	R	S
<b>STUDS (5/10A)</b>	6.00" (152)	4.00" (102)	2.00" (51)	3.50" (89)	4.50" (114)	2.50" (64)	0.77" (20)	0.88" (22)	1.80" (46)	1.00" (25)	0.30" (8)	Ø 0.25"x0.20" (Ø , 6.4x5.1, 4x)	STUD, M5, 4x	N/A	0.25" (6)	3.00" (76)	0.25" (6)	0.35" (9)	INSERT 6-32, 4x
<b>STUDS (15/25A)</b>	9.31" (237)	5.00" (127)	1.85" (47)	4.51" (115)	7.50" (191)	4.00" (102)	1.40" (36)	1.30" (33)	3.31" (84)	0.93" (24)	0.59" (15)	Ø 0.29"x0.20,4x (Ø , 7.6x5.1, 4x)	STUD, M5, 4x	STUD, GND, M5	0.25" (6)	5.00" (127)	0.25" (6)	0.34" (9)	N/A
<b>STUDS (30/50A)</b>	11.31" (287)	5.00" (127)	1.85" (47)	4.50" (114)	9.50" (241)	4.00" (102)	1.75" (44)	1.13" (29)	3.31" (84)	0.93" (24)	0.27" (7)	Ø 0.20"x0.29",4x (Ø , 5.1x7.6, 4x)	STUD, M5, 4x	STUD, GND, M5	0.25" (6)	5.00" (127)	0.25" (6)	0.34" (9)	N/A

TYPICAL TOLERANCE: +/-0.02" (0.50MM)

# TGM7200

MIL/COTS **AC**, SINGLE PHASE EMI POWER LINE FILTER

## TYPICAL INSERTION LOSS, dB (50/50 Ohm)

Amps	Freq (MHz)	0.15	0.5	1.0	10	30
5	CM (dB)	38	50	60	70	70
	DM (dB)	45	60	60	60	
10	CM (dB)	38	50	60	70	70
	DM (dB)	45	60	60	60	
15	CM (dB)	38	50	60	70	70
	DM (dB)	45	60	60	60	
25	CM (dB)	38	50	60	70	70
	DM (dB)	45	60	60	60	
30	CM (dB)	38	50	60	70	70
	DM (dB)	45	60	60	60	
50	CM (dB)	38	50	60	70	70
	DM (dB)	45	60	60	60	