

TGM8000

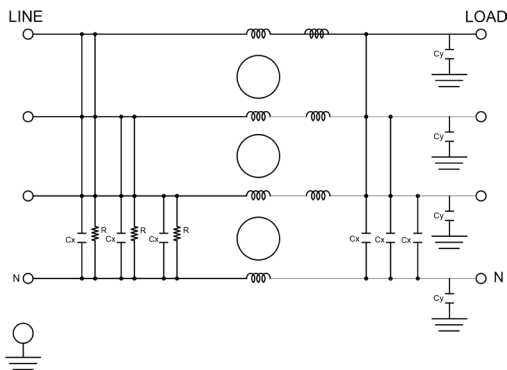
MIL/COTS 3-PHASE **WYE** EMI POWER LINE FILTER

FEATURES

- » Rated currents include **5A, 10A, 20A, 30A, 50A, 80A, 125A and 150A**
- » Dual Stage Line Filter
- » Available with **S** (studs)
- » Agency Approved to RoHS
- » Y-cap value can be adjusted to fit specification



ELECTRICAL SCHEMATIC



SPECIFICATIONS

OPERATING FREQUENCY	50/60/400 Hz
MAX. OPERATING VOLTAGE	480 VAC +10%
AMBIENT TEMPERATURE	-40 TO 70°C
CLIMATIC CATEGORY	25/100/21
TERMINALS (-T)	STUDS: 5-50A (M5), 80A (M6), 125-150A (M10)
TYP. WEIGHT, LBS (KG)	2.7-35(1.22-15.87)

TYPICAL LEAKAGE CURRENT

@ 480 VAC 60 Hz 0 - 3.50 mA Max.

HIPOT RATINGS

LINE TO GROUND 1800 VDC

TYPICAL APPLICATIONS

- ✓ Mil-461/ DO-160

NOTE:

- ✓ Call for other termination types (e.g. Circular Mil-Connector, etc.)

HOW TO ORDER

TGM8000 - Y - Z

Z = TERMINAL (-T)
X = RATED CURRENT

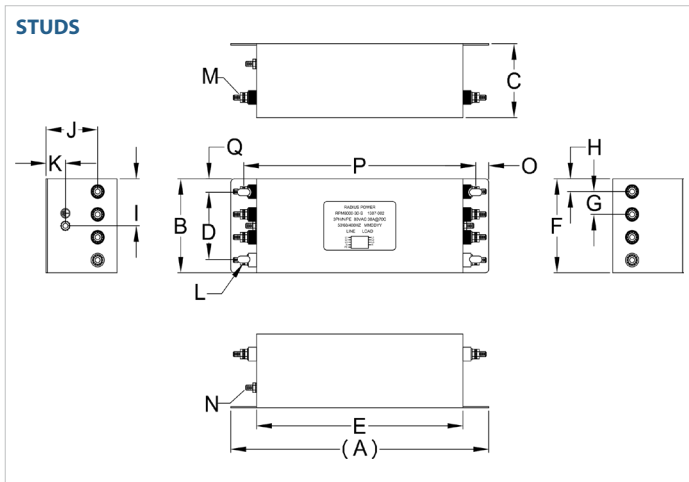
TGM8000=FILTER SERIES

TGM8000

MIL/COTS 3-PHASE **WYE** EMI POWER LINE FILTER

MODEL NO.	RATED CURRENT, A @ 40° C	LEAKAGE CURRENT, mA @ 480V AC, 60 Hz	TERMINAL OPTIONS			MAX. DIMENSIONS" (MM)		
			(QD) INPUT/ OUTPUT	(W) INPUT/ OUTPUT	(S) INPUT/ OUTPUT	WIDTH	(LENGTH)	HEIGHT
TGM 8000-5-S	5	3.50			✓	4.25"(108)	6.06"(154)	2.25"(57)
TGM 8000-10-S	10	3.50			✓	4.25"(108)	6.06"(154)	2.25"(57)
TGM 8000-20-S	20	3.50			✓	4.00"(102)	6.76"(172)	2.75"(70)
TGM 8000-30-S	30	3.50			✓	3.50"(89)	10.00"(254)	2.75"(70)
TGM 8000-50-S	50	3.50			✓	3.90"(99)	12.36"(314)	3.25"(83)
TGM 8000-80-S	80	3.50			✓	6.60"(168)	12.00"(305)	4.50"(114)
TGM 8000-125-S	125	3.50			✓	9.60"(244)	17.00"(432)	4.50"(114)
TGM 8000-150-S	150	3.50			✓	9.60"(244)	17.00"(432)	4.50"(114)

TGM8000 MECHANICAL OUTLINES (MM)



SERIES	(A)	B	C	D	E	F	G	H	I	J	K	L	M	N	O	P	Q
STUDS (5/10A)	6.06" (154)	4.25" (108)	2.25" (57)	3.50" (89)	4.25" (108)	4.25" (108)	0.90" (23)	0.75" (19)	2.13" (54)	1.80" (46)	0.75" (19)	Ø0.40"x0.20", 4x Ø 10.2x5.1, 4x	STUD, M5, 8x	STUD, GND, M5	0.37" (10)	5.00" (127)	0.38" (10)
STUDS (20A)	6.76" (172)	4.00" (102)	2.75" (70)	3.25" (83)	5.00" (127)	4.00" (102)	1.00" (25)	0.50" (13)	2.00" (51)	2.20" (56)	1.00" (25)	Ø0.40"x0.20", 4x Ø 10.2x5.1, 4x	STUD, M5, 8x	STUD, GND, M5	0.45" (11)	5.80" (147)	0.38" (10)
STUDS (30A)	10.00" (254)	3.50" (89)	2.75" (70)	2.50" (64)	8.00" (203)	3.50" (89)	0.85" (22)	0.48" (12)	1.75" (44)	2.00" (51)	0.75" (19)	Ø 0.48"x0.25", 4x Ø 12.2x6.5, 4x	STUD, M5, 8x	STUD, GND, M5	0.50" (13)	9.00" (229)	0.50" (13)
STUDS (50A)	12.36" (314)	3.90" (99)	3.25" (83)	3.00" (76)	10.00" (254)	4.00" (102)	0.90" (23)	0.65" (17)	2.00" (51)	2.25" (57)	1.00" (25)	Ø 0.50"x0.25", 4x Ø 12.7x6.4, 4x	STUD, M6, 8x	STUD, GND, M6	0.50" (13)	11.00" (279)	0.45" (11)
STUDS (80A)	12.00" (305)	6.60" (168)	4.50" (114)	5.12" (130)	10.00" (254)	6.60" (168)	1.50" (38)	1.00" (25)	3.30" (84)	3.50" (89)	1.00" (25)	0.59"x0.25", 4x Ø 15.2x6.4, 4x	STUD, M6, 4x	STUD, GND, M6	0.50" (13)	11.00" (279)	0.74" (19)
STUDS (125/150A)	17.00" (432)	9.60" (244)	4.50" (114)	8.00" (203)	15.00" (381)	9.60" (244)	4.80" (122)	2.40" (61)	3.25" (83)	3.25" (83)	1.00" (25)	N/A	STUD, M10, 8x	STUD, GND, M10	0.50" (13)	16.00" (406)	0.80" (20)

TYPICAL TOLERANCE: +/-0.02" (0.50MM)

TGM8000

MIL/COTS 3-PHASE **WYE** EMI POWER LINE FILTER

TYPICAL INSERTION LOSS, dB (50/50 Ohm)

Amps	Freq (MHz)	0.15	0.5	1.0	10	30
5	CM (dB)	30	48	60	55	40
	DM (dB)	22	40	55	55	45
10	CM (dB)	30	48	60	55	40
	DM (dB)	22	40	55	55	45
20	CM (dB)	30	48	60	55	40
	DM (dB)	22	40	55	55	45
30	CM (dB)	30	48	60	55	40
	DM (dB)	22	40	55	55	45
50	CM (dB)	30	48	60	55	40
	DM (dB)	22	40	55	55	45
80	CM (dB)	30	48	60	55	40
	DM (dB)	22	40	55	55	45
125	CM (dB)	30	48	60	55	40
	DM (dB)	22	40	55	55	45
150	CM (dB)	30	48	60	55	40
	DM (dB)	22	40	55	55	45

TGM8000

MIL/COTS 3-PHASE **WYE** EMI POWER LINE FILTER

TGM8000

MIL/COTS 3-PHASE **WYE** EMI POWER LINE FILTER

TGM8000

MIL/COTS 3-PHASE **WYE** EMI POWER LINE FILTER

TGM8000

MIL/COTS 3-PHASE **WYE** EMI POWER LINE FILTER